

THE
LINKS

GLYFADA



A
SOUL

Contents

01. Creating THE LINKS

02. Location

03. Design Concept

04. Special Features

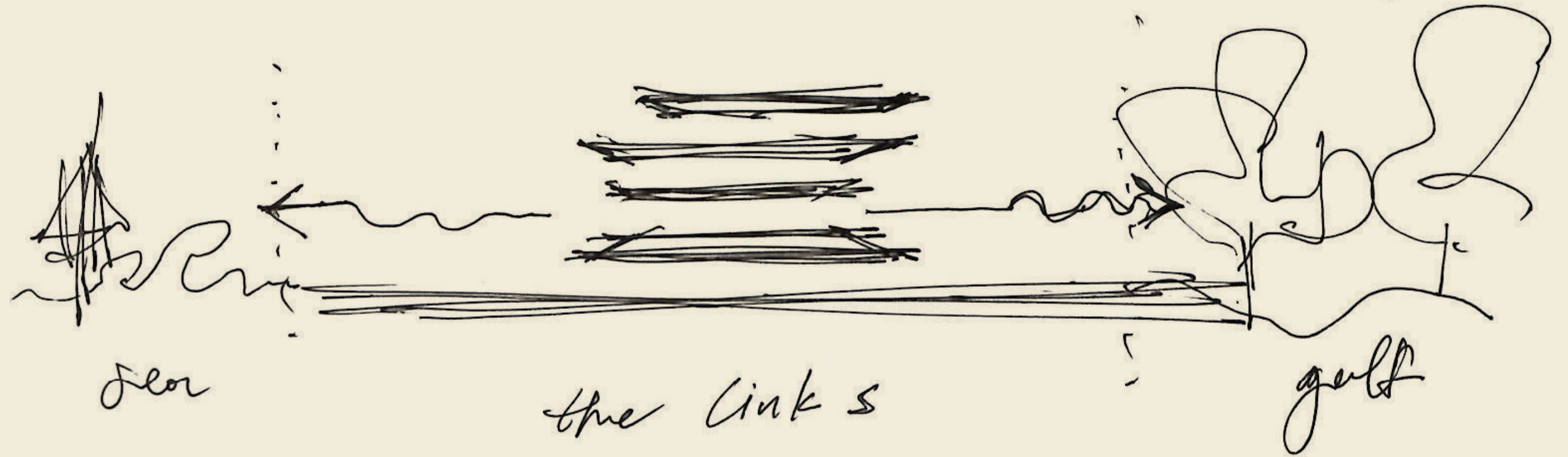
05. Project Breakdown

06. Contact us



Creating The Links

The Story of The Links Glyfada



Nestled between the coastline of the Athenian Riviera and the fairways of the historic Glyfada Golf Course, The Links Glyfada emerges at the meeting point of landscape, leisure and contemporary living.

The name “Links” draws from the traditional golf term describing terrains where land meets sea — a condition defined by openness, continuity and horizon. In Glyfada, this idea is reinterpreted through architecture, where the green expanse, the coastal edge and the city converge.

Comprising just four residences, the project is conceived as a carefully composed living structure rather than a conventional development. Each residence is positioned to establish a distinct relationship with its surroundings, framing both the golf landscape and the distant horizon.

At The Links, architecture is defined not by scale, but by precision — an approach shaped by alignment, proportion and a quiet sense of connection.

Location



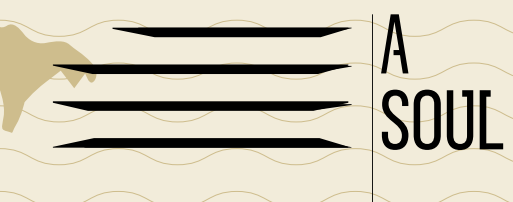
Location



THE LINKS

DRIVING DISTANCE

Glyfada shopping district	2 km
Golf of Glyfada	4.9 km
Hellinikon	5.8 km
Astir Beach	6.1 km
Athens city centre	16 km
Acropolis	18.5 km
Cape Sounio	47.8 km
Piraeus port	19.2 km
Athens International Airport	22.4 km



Location

THE
LINKS

GLYFADA



Location

The Athenian Riviera



Located in one of the most sought-after areas of the Athenian Riviera, The Links Glyfada offers a residential setting defined by both calm and connectivity.

The area is shaped by its proximity to the coastline and the historic Glyfada Golf Course, creating a unique spatial openness rarely found within the city.

Glyfada has evolved into a key lifestyle destination, while the transformation of Ellinikon is redefining the wider region as one of the most dynamic urban developments in Europe.

The Links is positioned where landscape, city and future growth intersect.



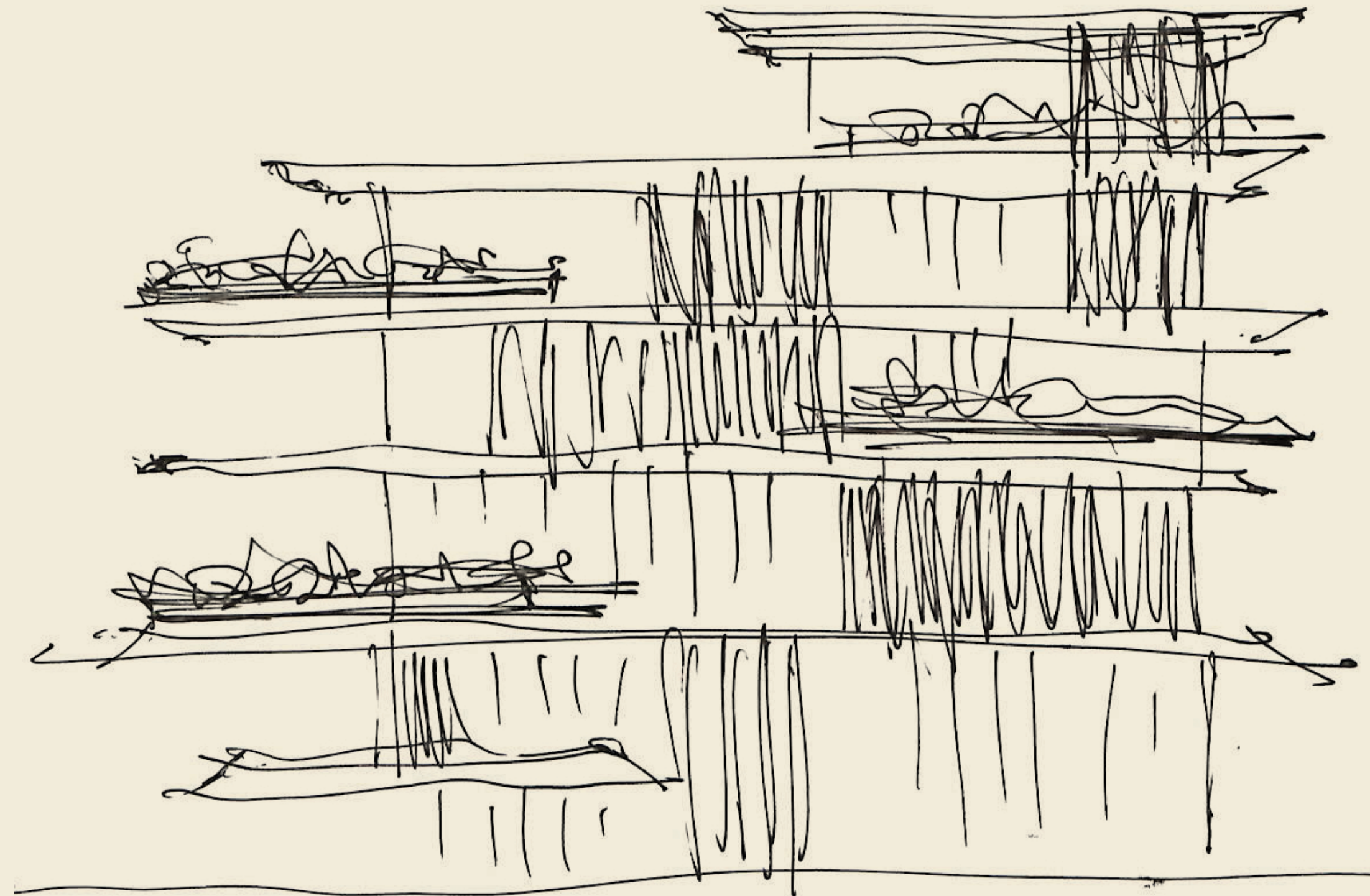
Design Concept

The design of The Links is based on a clear geometric structure, where horizontal layering defines the overall composition.

Rather than a singular volume, the building is articulated as a sequence of planes and elements, each positioned to create alignment, rhythm and spatial clarity.

Openings are introduced with precision, allowing light and views to enter in a controlled manner, while reinforcing the relationship between interior and exterior space.

The result is a balanced architectural language — defined by proportion, continuity and a restrained material expression.



Design Concept



A way of living

Life at The Links is shaped by a continuous relationship between interior and exterior space.

Living areas extend naturally towards terraces and open views, allowing daily life to unfold across different spatial layers rather than within a single enclosed volume.

The organization of the residences supports both privacy and openness, creating a living environment that adapts to different rhythms — from moments of quiet retreat to more social uses.

Light, orientation and spatial flow define the atmosphere throughout the day, offering a way of living that is both relaxed and structured.

The Links offers a living experience defined by continuity, balance and spatial clarity.

Design Concept

Materiality & Atmosphere

The material palette of The Links is defined by clarity and restraint, combining natural textures with refined, contemporary finishes.

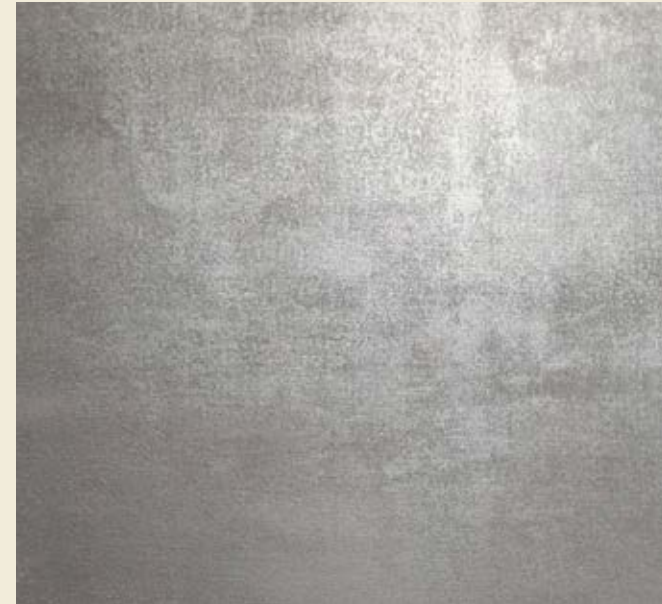
Stone, wood and mineral surfaces create a sense of warmth and permanence, while maintaining a clean and balanced architectural expression.

Neutral tones enhance the presence of light throughout the spaces, allowing subtle variations in texture and shadow to shape the overall atmosphere.

The result is an environment that feels calm, tactile and composed — where materiality supports the architecture without overwhelming it.



Design Concept



Plaster

Wood

Stone

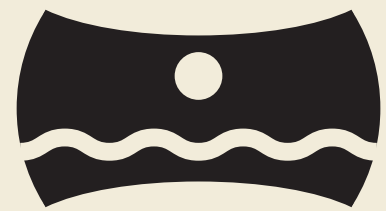
Metal

Tiles

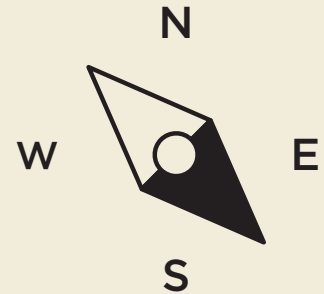
Accessories

Nature

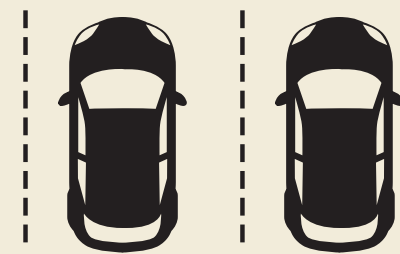
Special Features



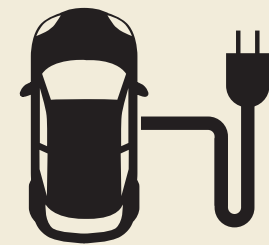
180° view



Orientation



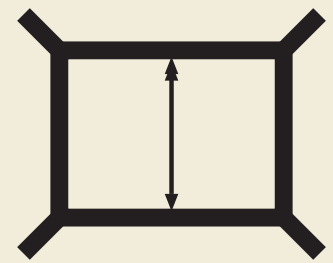
Parking spots



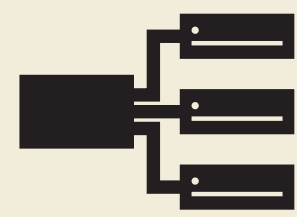
Car charging stations



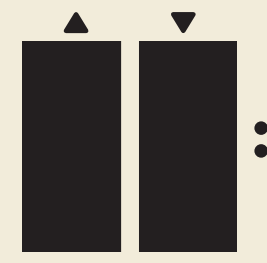
Smart house



Floor-to-ceiling windows



VRV air conditioning



Lift access to all areas



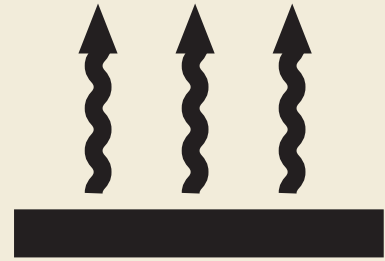
Ecological footprint



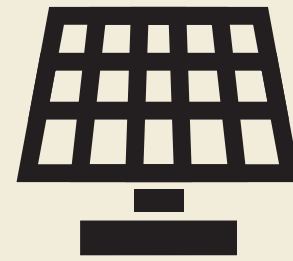
Energy efficiency class



Maisonette



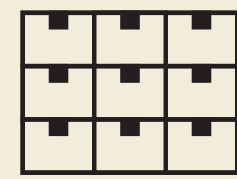
Floor heating



PV panels



Private gym



Storerooms



The Horizon Residence

levels 4, 5

the Fairway Residence II

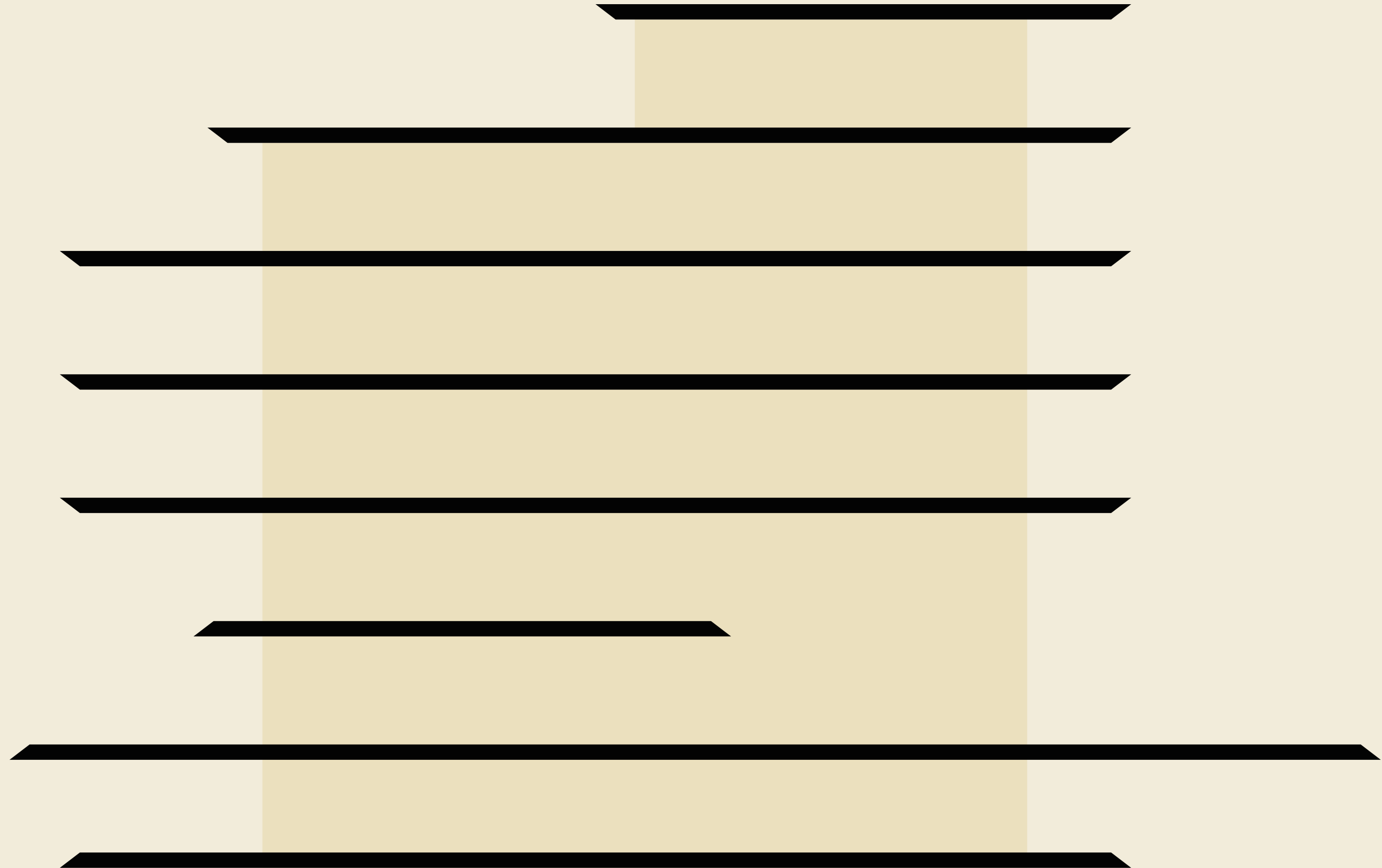
level 3

the Fairway Residence I

level 2

the Garden Residence

levels -1, 0, 1



The project comprises four residences — a townhouse, two apartments and a penthouse — each positioned in relation to light, landscape and horizon.

The building is complemented by a series of shared elements, including a private gym, a lobby and the presence of water as part of the overall composition.

The Residences

Project breakdown

The Garden Residence


The Garden Residence is defined by its direct connection to the ground, where interior spaces extend naturally into a private outdoor environment, complemented by a pool and fire pit.


Organized across three levels, the residence balances openness and privacy, with living areas engaging with the garden and more secluded spaces positioned within the depth of the volume.


The outdoor space unfolds across two split levels, creating a layered landscape that enhances both use and spatial continuity.


A double-height space introduces vertical openness, allowing light to penetrate deep into the interior and reinforcing the relationship between built form and landscape.


The result is a residence that feels grounded, spatially fluid and closely connected to its surroundings.


 **Total Surface**
240m²

 **Pool**
42m²

 **Outdoor area**
310m²

 **Bedrooms**
4

 **Baths**
5

 **Parking**
2

 **Storage**
1

 **Levels**
3

 **Kitchen**
2



The Garden Residence



The Garden Residence

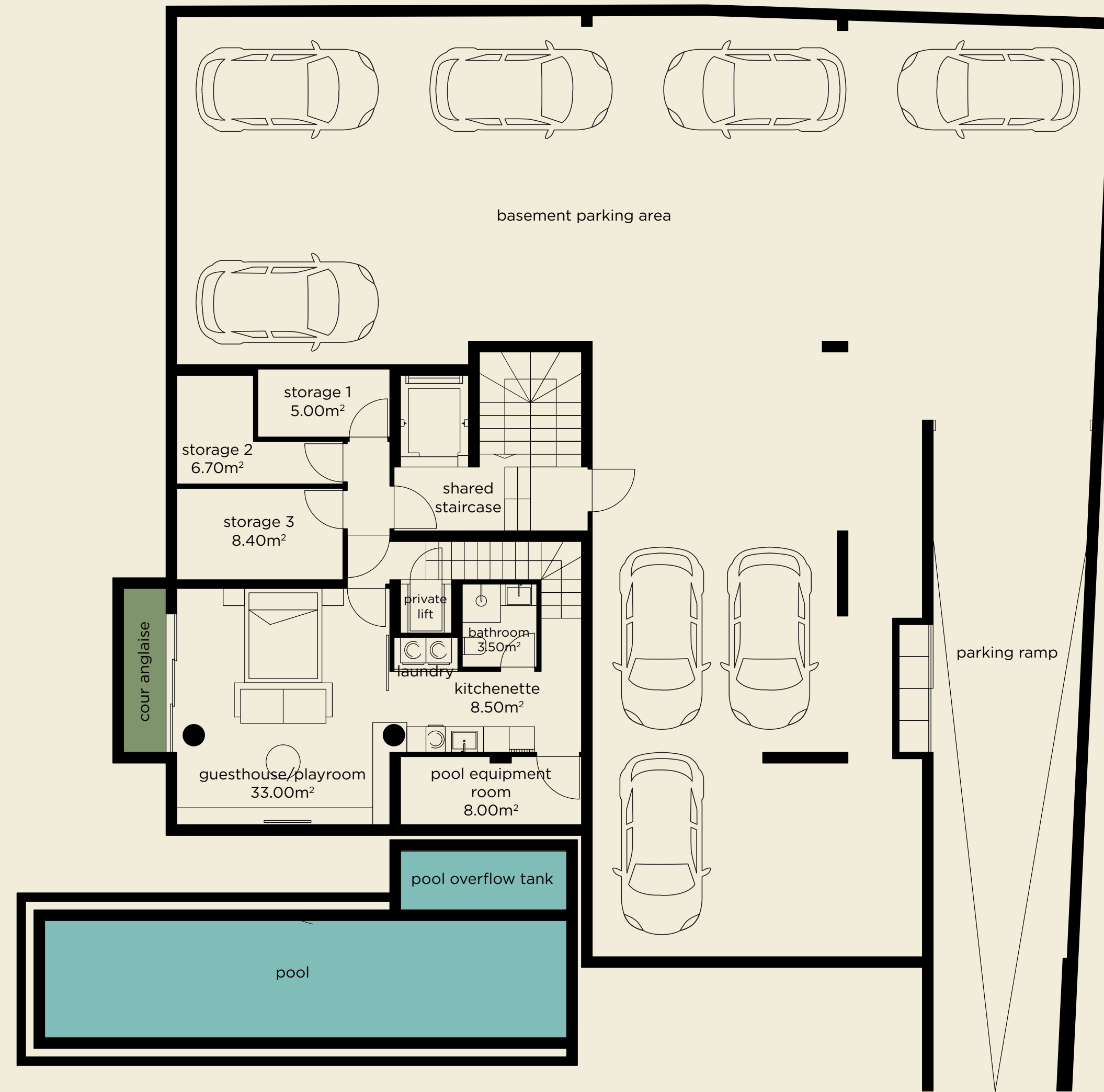
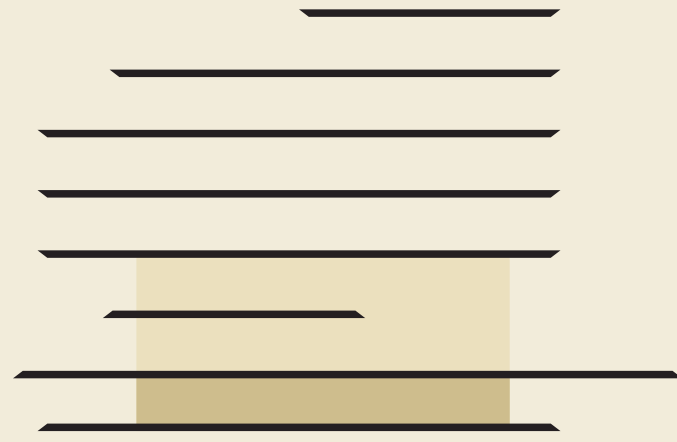


The Garden Residence



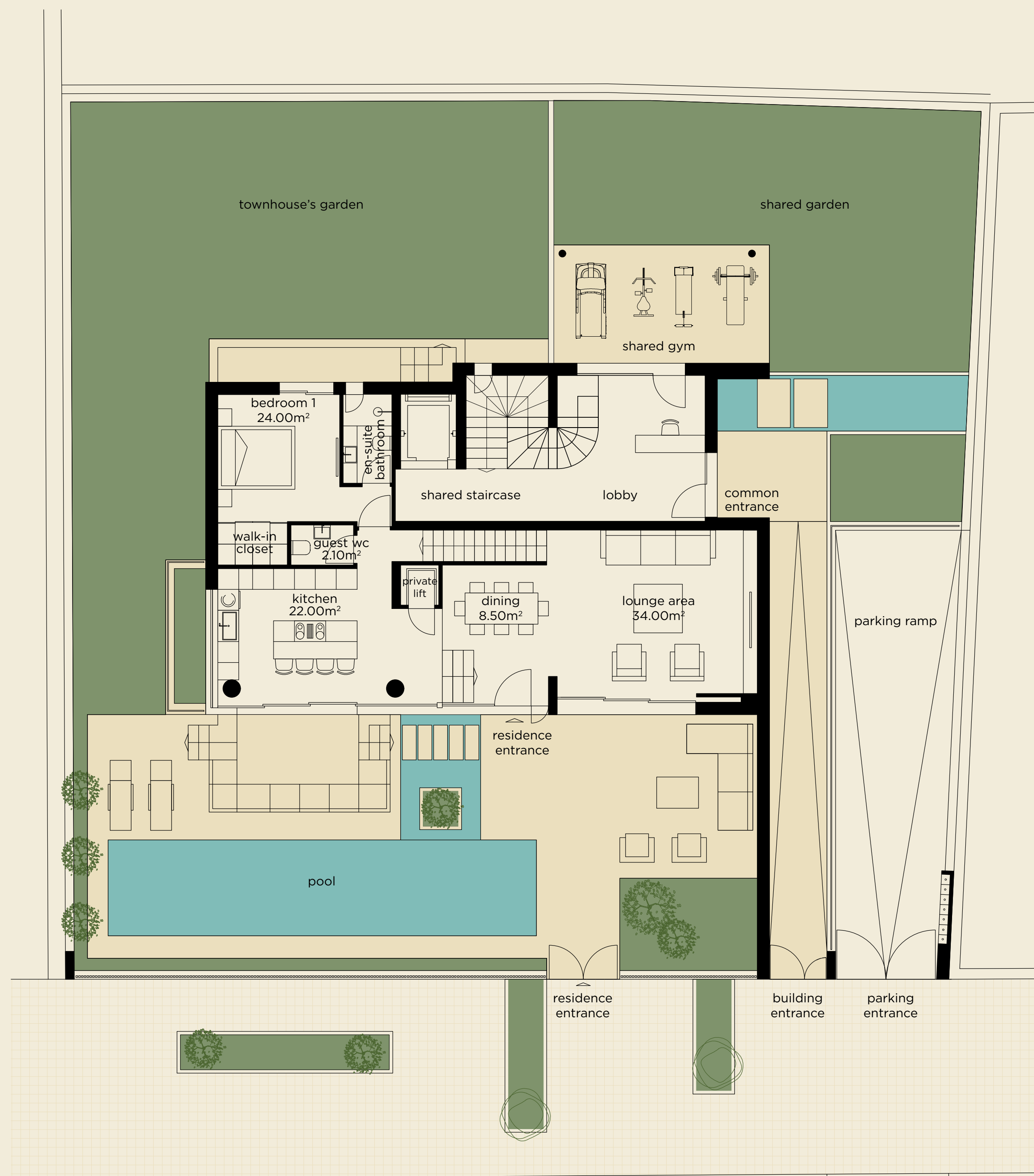
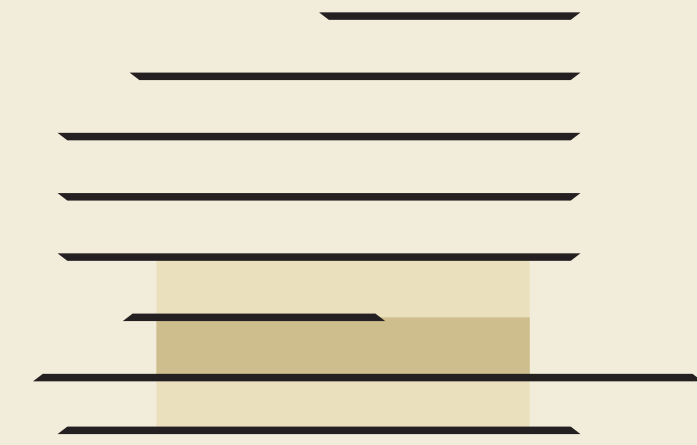
The Garden Residence

Level -1



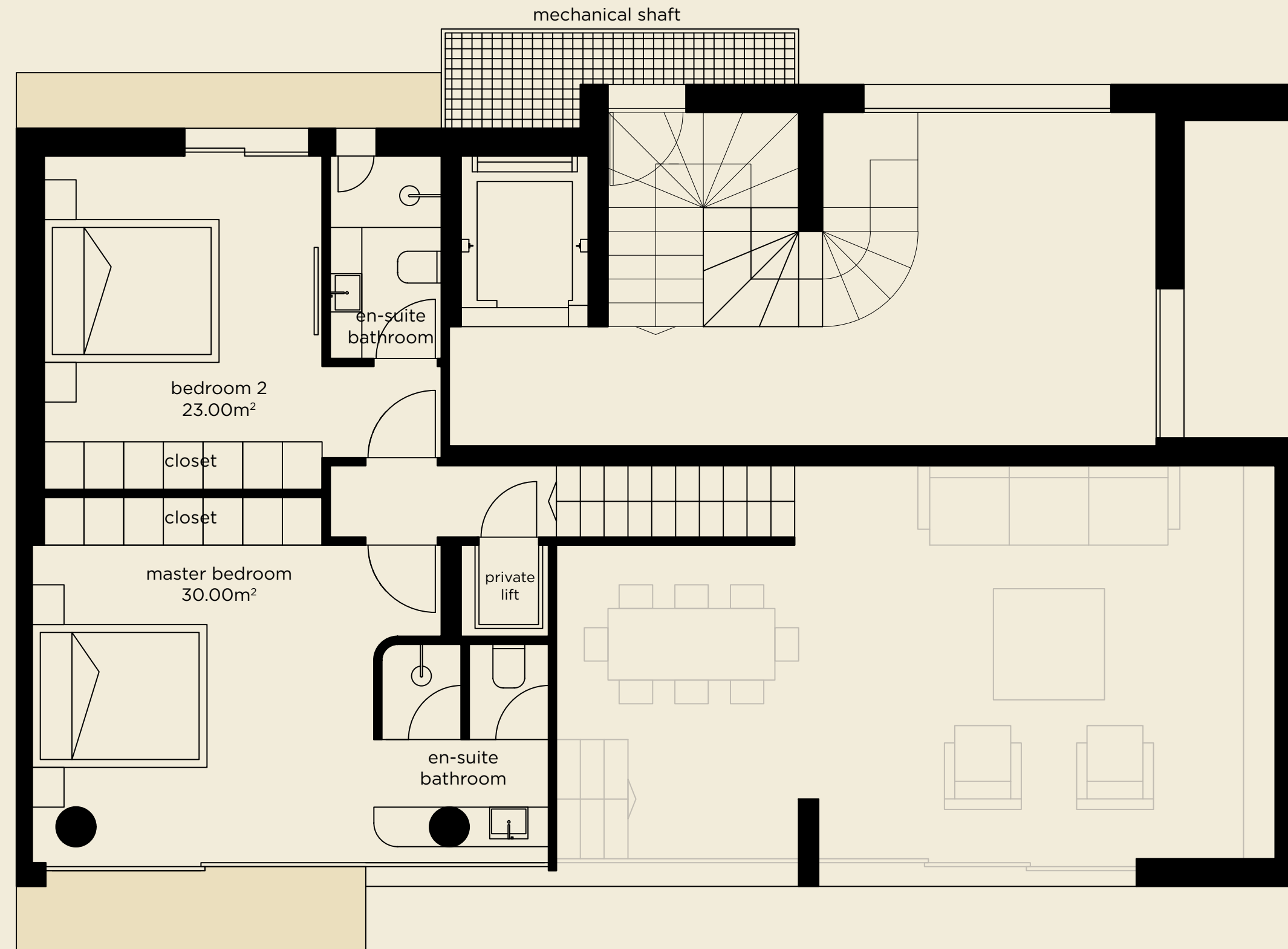
The Garden Residence

Level 0



The Garden Residence

Level 1



Project breakdown

The Fairway Residences I & II


The Fairway Residences are positioned in direct relation to the open landscape, offering a continuous visual connection to the surrounding horizon.

Organized on a single level, each residence is defined by a clear and efficient layout, where living spaces extend towards generous terraces and private plunge pools.


Corner positioning enhances openness and orientation, allowing light to enter from multiple directions while framing broader views across the landscape.


The result is a series of residences that emphasize horizontality, clarity and an effortless relationship between interior space and the exterior environment.




 **Total Surface**
143m²

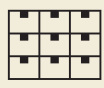
 **Pool**
5m²

 **Outdoor area**
60m²

 **Bedrooms**
3

 **Baths**
4

 **Parking**
2

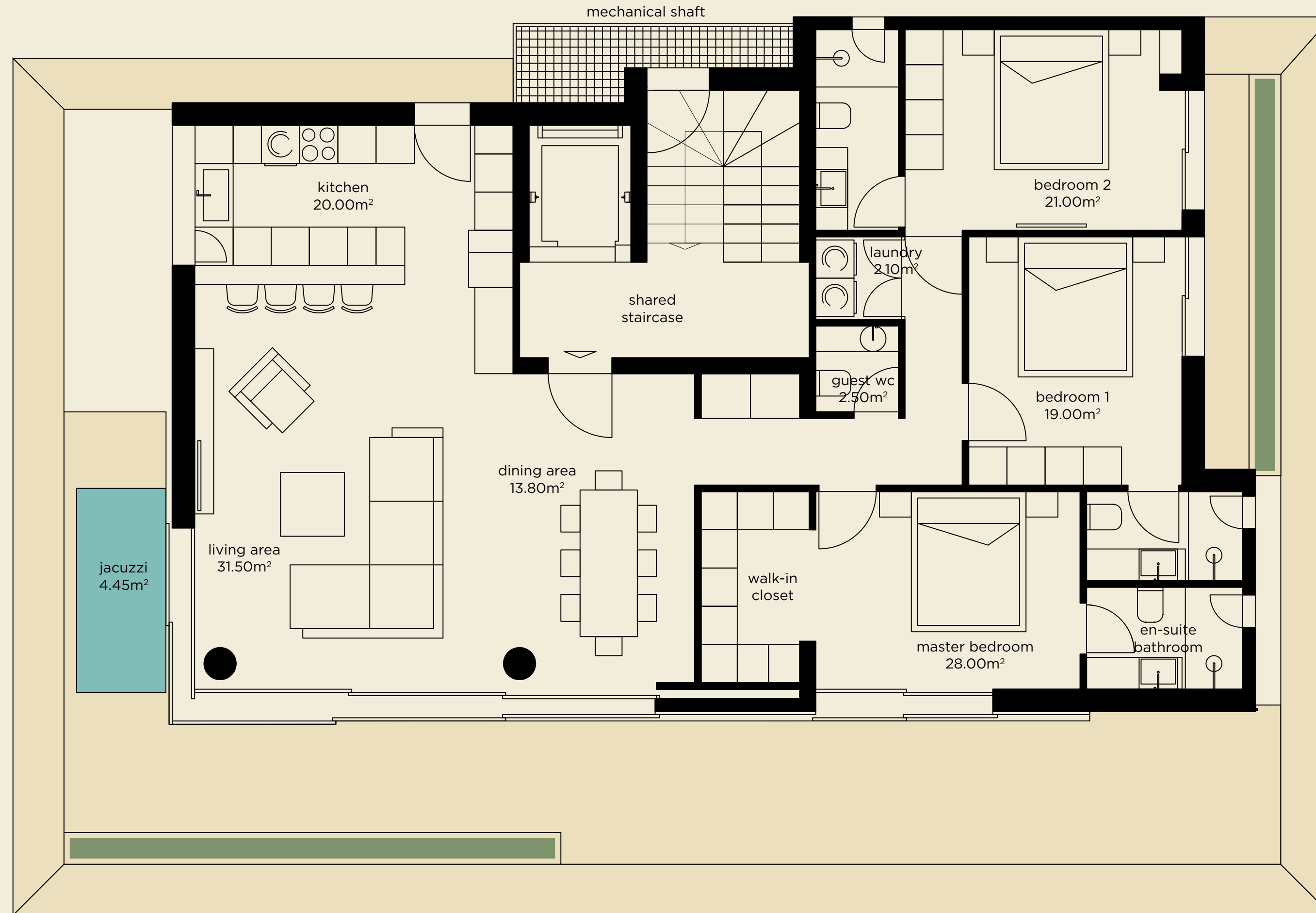
 **Storage**
1

The Fairway Residences I & II



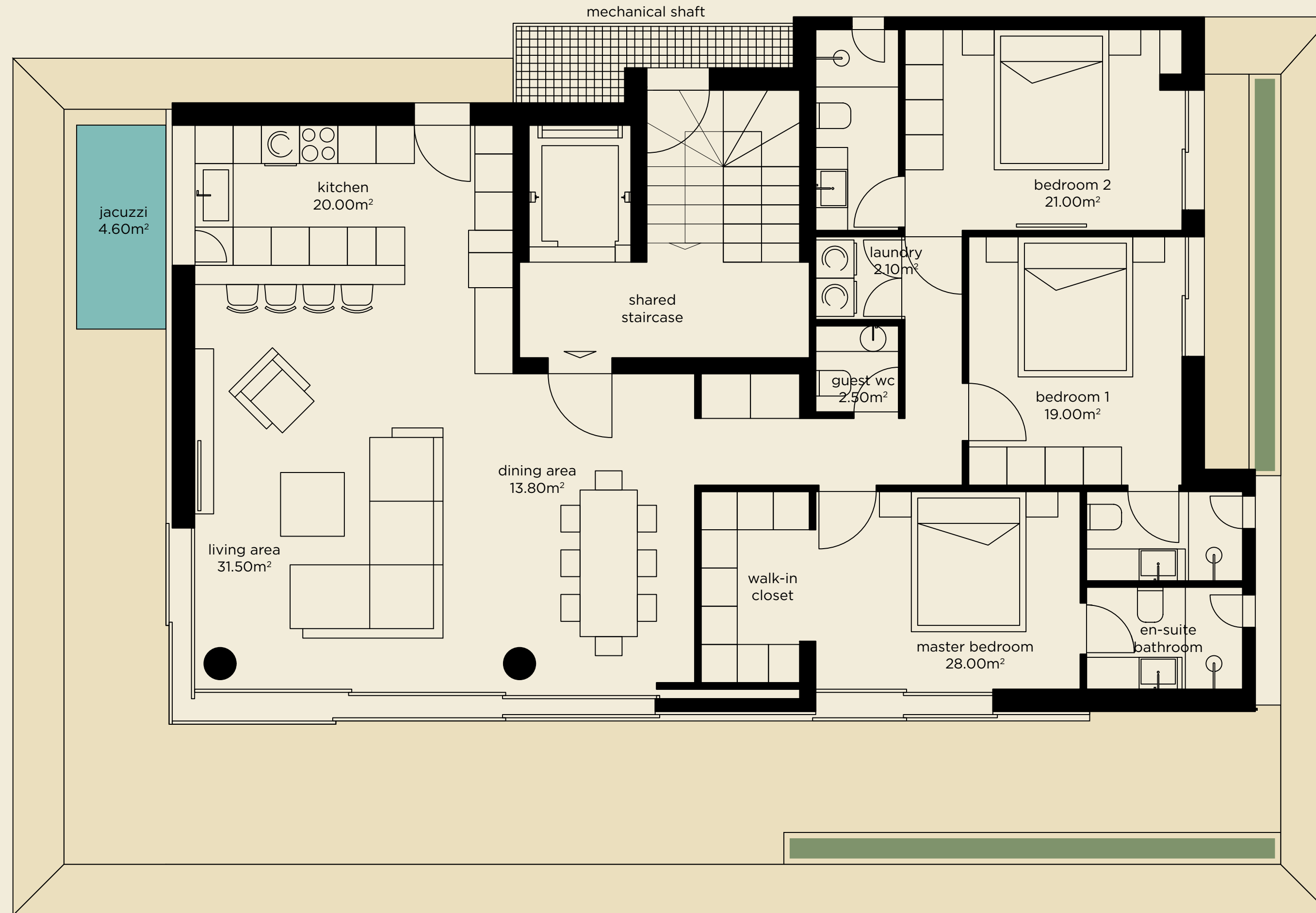
The Fairway Residence I

Level 2



The Fairway Residence II

Level 3



Project breakdown

The Horizon Residence

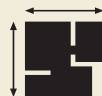


The Horizon Residence occupies the upper level of the building, offering an elevated perspective over the surrounding landscape, with open views extending towards the sea.


Organized across two levels, the residence unfolds towards expansive terraces, where interior and exterior spaces remain closely connected.


A private pool extends the living areas outward, while large openings frame the horizon and allow light to shape the interior throughout the day.

The result is a residence that emphasizes elevation, openness and a strong connection to the distant landscape.

 **Total Surface**
212m²

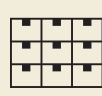
 **Pool**
20m²

 **Outdoor area**
135m²

 **Bedrooms**
3

 **Baths**
4

 **Parking**
2

 **Storage**
1

 **Levels**
2

 **Kitchen**
2

The Horizon Residence



The Horizon Residence

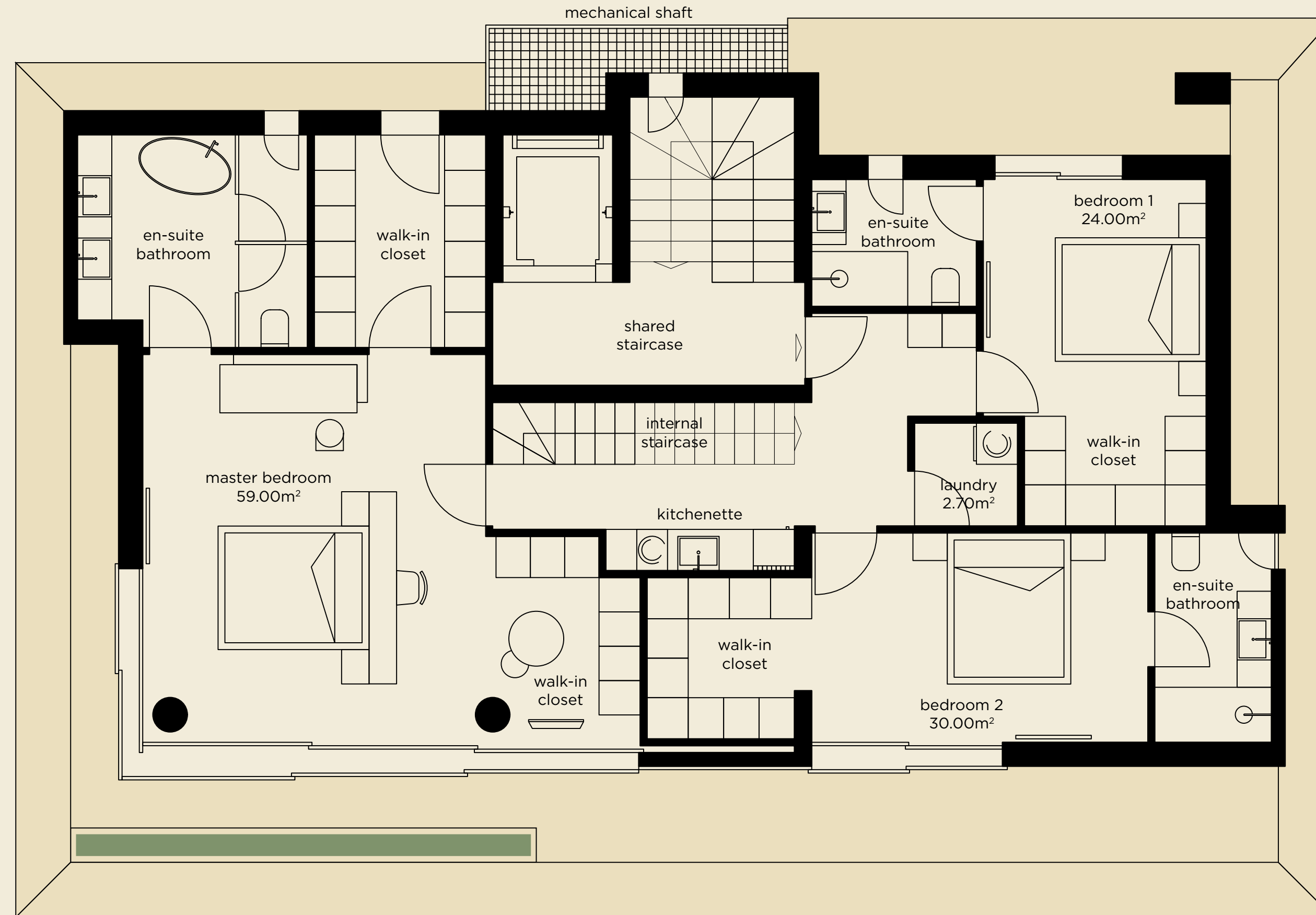


The Horizon Residence



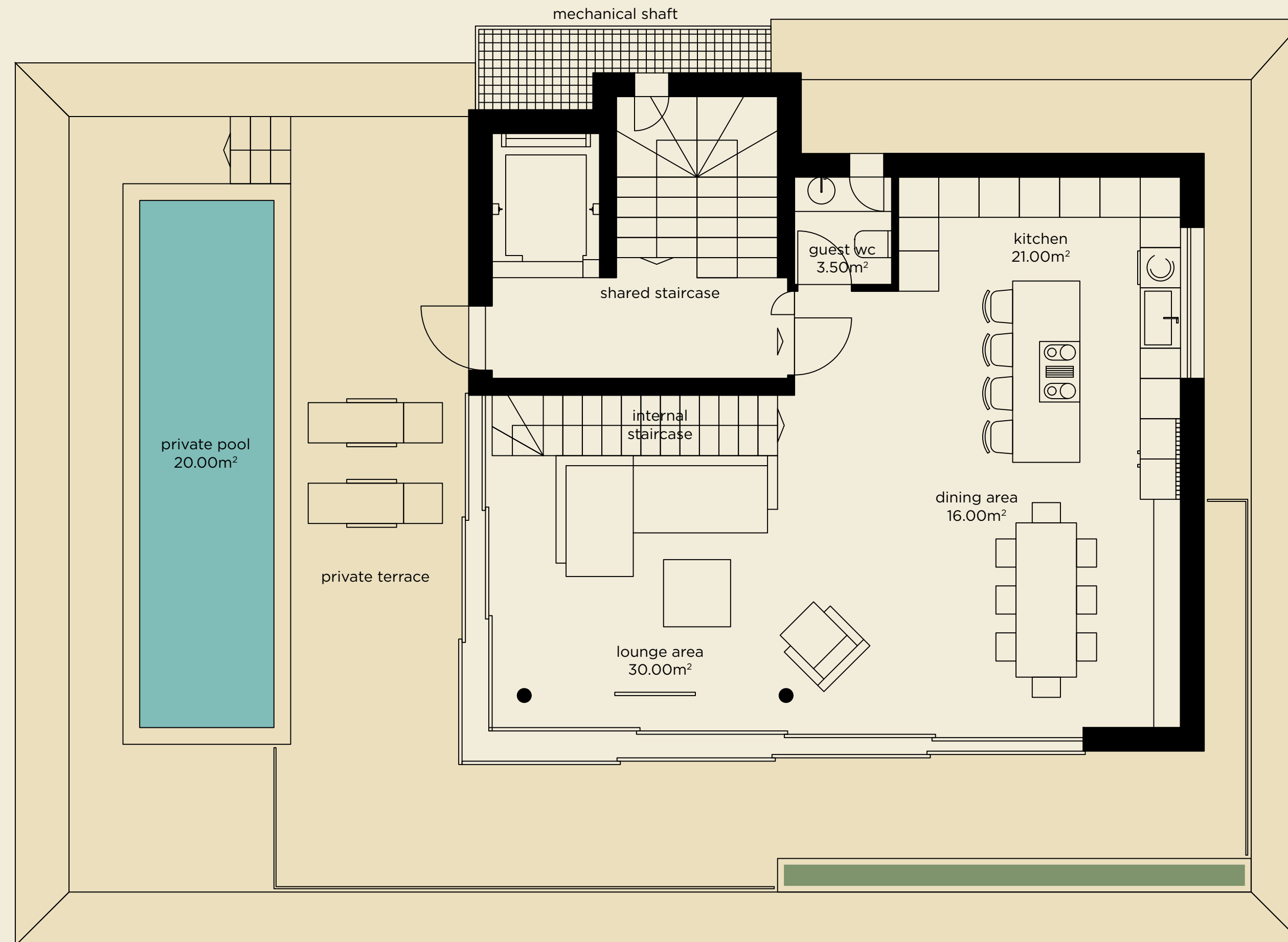
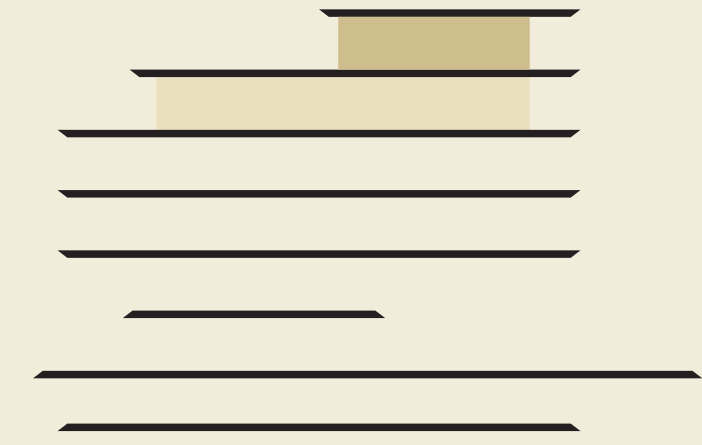
The Horizon Residence

Level 4



The Horizon Residence

Level 5



The Horizon Residence



Info

Delivery date spring 2027

asoul.gr

info@asoul.gr

+30 210 7250 080

+30 6946 414 529

A SOUL

This presentation/brochure has been prepared by ASOUL Architecture & Construction, exclusively and on a strictly confidential basis for the benefit of the person or company to whom this presentation is sent to (the "Recipient"), in order for the Recipient to evaluate their potential interest to acquire one or more of the apartment units of this project, currently under construction. This presentation may not be reproduced or disseminated in any form without the express written consent of ASOUL Architecture & Construction or its employees shall in no circumstances whatsoever be liable or responsible for any inaccuracies, omissions, mistakes or errors in this presentation and for any economic or any other loss or damage incurred or suffered by the reader / user or any other person, arising (whether directly or indirectly) out of or, in connection with, such information the fullest extent permitted by law. This presentation has been prepared without prejudice and does not constitute an offer, invitation or recommendation to buy or a solicitation of any such offer or invitation. Opinions, data and information expressed and contained herein are subject to change without notice. ASOUL Architecture & Construction undertakes no obligation to provide the Recipient with access to any further information or to correct any inaccuracies or omissions which may become apparent.

Photo rendering © sugarvisuals | Brochure design © wedesign

